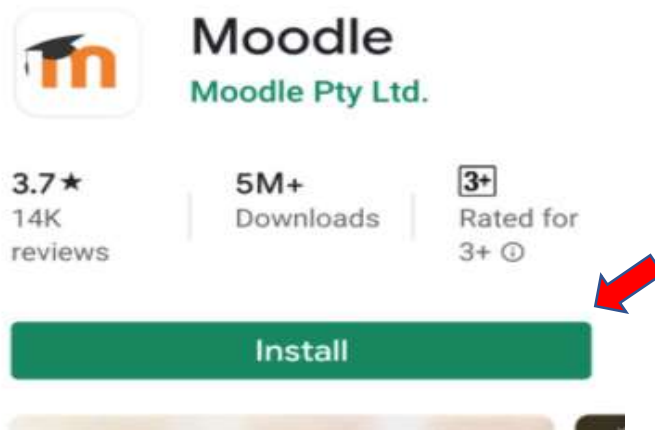


1. Go to your app store, type “Moodle.” The app should look like this. Click “Install”



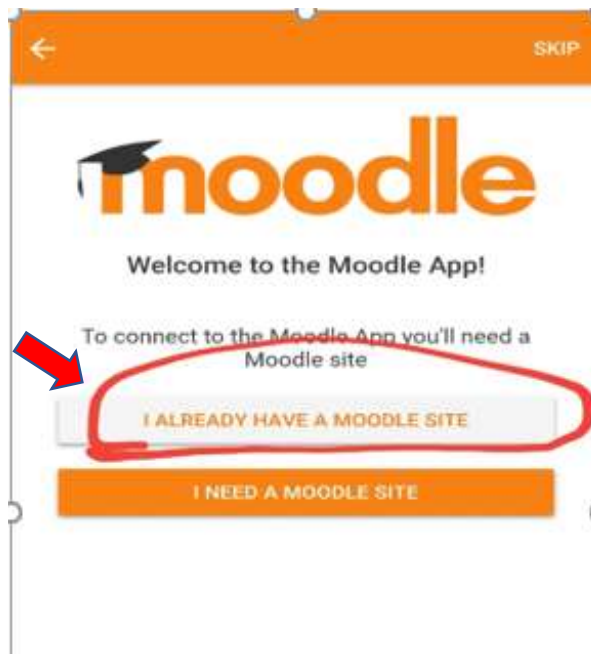
Note: If you are unable to locate the app in your app store:

Apple store- <https://apps.apple.com/us/app/moodle/id633359593>

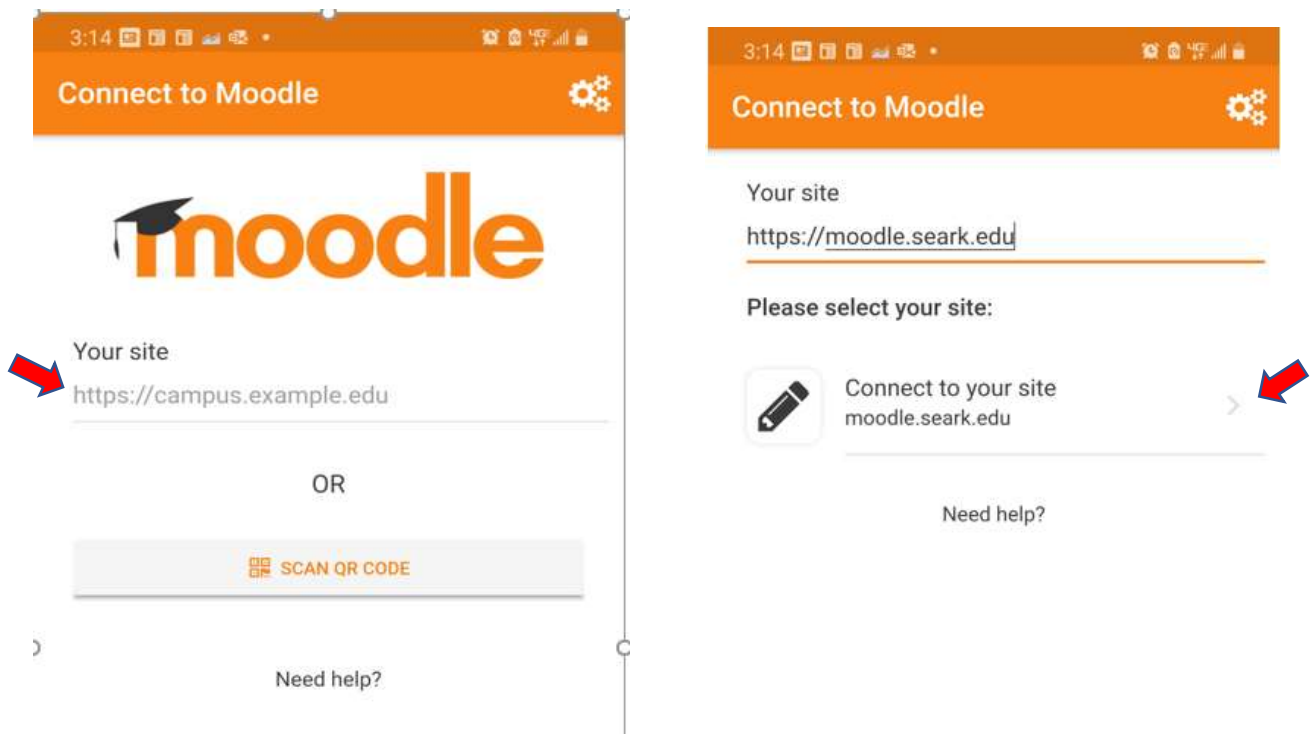
Google Play store-

[https://play.google.com/store/apps/details?id=com.moodle.moodlemobile&hl=en\\_US&gl=US](https://play.google.com/store/apps/details?id=com.moodle.moodlemobile&hl=en_US&gl=US)

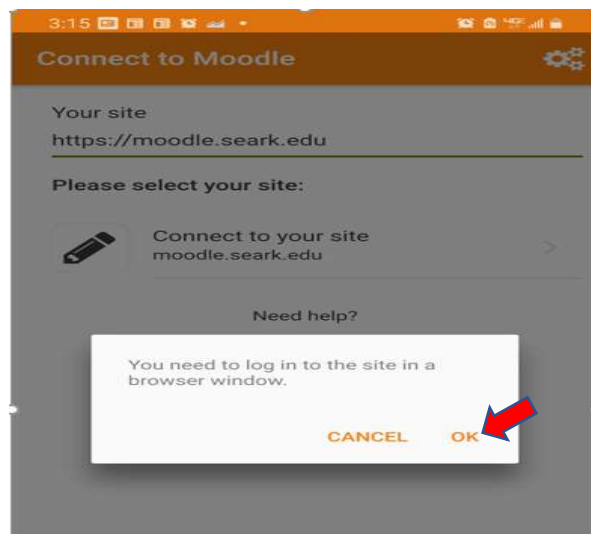
2. After installed, click open. This is the first screen you will see. Students will select “I’m a Learner” Faculty will select “I’m an Educator”
3. You will be directed to this screen. Click “I already have a Moodle site”



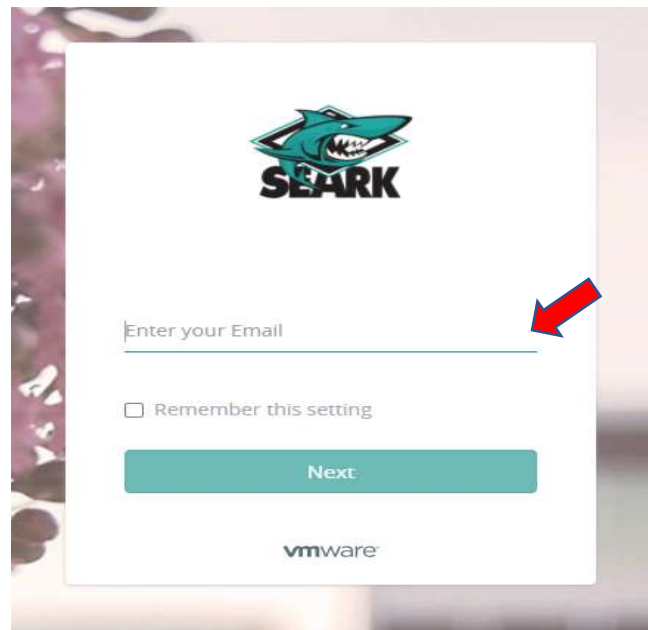
4. 4a. Where it says “Your site” you will enter <https://moodle.seark.edu>  
(As you are entering the Moodle URL, the “Connect to your site” option will appear)  
4b. Click “Connect to your site”



5. This message will pop up and explain that you need to log in to the site in a browser window. Click “OK”



- You will be directed to the SEARK login page, you will use your SEARK email and password to log in.



- After logging in you will be directed back to the Moodle app. (NOTE: You will only have to log in through the SEARK portal the first time you access the Moodle app on your device, you will not have to log in every time.)
- The Moodle app will be available for you to access 24/7. Students: You can access your Moodle courses, complete homework, receive notifications, and much more!

